

# ***St. George's Central CE Primary School and Nursery***

***Welcome to Y1KB***

***Teacher: Miss Beswick***

***Teaching Assistant: Mrs Tomines***

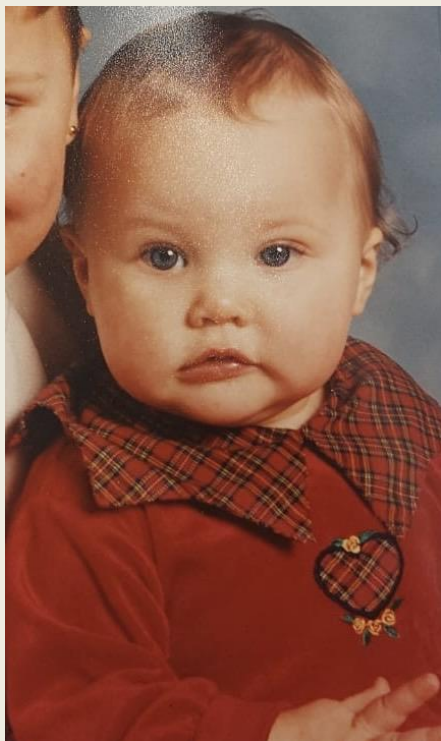


***'Never settle for less than your best'***



# *St. George's Central CE Primary School and Nursery*

## *Miss Beswick*



This is my 5<sup>th</sup> year teaching, I began my career at SGC in Reception and then made the move last year into Year 1.

Outside of school, my world revolves round my little family. We love exploring new places and being outside!



*'Never settle for less than your best'*



# *St. George's Central CE Primary School and Nursery*

## *Mrs Tomines*



This is my second year at Saint Georges Central.

Last year I was in Year 2, I am looking forward to being in Year 1 and am very happy to be working here at SGC/

When I am not in school, my family keep me busy – specially my 10 year old son. We love watching movies and travelling as family!



*'Never settle for less than your best'*



# St. George's Central CE Primary School and Nursery



**@MissKBSGC**



***'Never settle for less than your best'***





# St. George's Central CE Primary School and Nursery

## Y1KB Class timetable

Doors open at 8:40am	KS1 9:00am – 9:20am	KS1 9:20am – 10:20am	Snack & Break 10:20am – 10:35am	KS1 10:35am – 11:05am	KS1 11:05am – 12:00pm	KS1 Lunch 12:00pm – 1:00pm	KS1 1:00pm – 1:30pm	KS1 1:30pm – 2:00pm	KS1 2:15pm – 3:00pm	Class Reader 3:00pm – 3:20pm
<b>Mon</b>	Whole School Worship: <b>MG/AM</b>	<b>Maths</b>	<b>Snack and break</b>	<b>Little Wandle Reading</b>	<b>English</b>	<b>Lunch</b>	<b>Phonics/ Spelling/ Handwriting</b>	<b>Science</b>	<b>Science</b>	<b>Class reader</b>
<b>Tues</b>	Whole School Hymns: <b>VG</b> (Miss Davies)	<b>Music</b> (Miss Davies)	<b>Snack and break</b> (Miss Davies)	<b>Little Wandle Reading</b> (Miss Davies until 10:45am)	<b>English</b>	<b>Lunch</b>	<b>Phonics/ Spelling/ Handwriting</b>	<b>Maths</b>	<b>Outdoor PE</b>	<b>Class reader</b>
<b>Wed</b>	Whole School Worship: Class teachers	<b>Maths</b>	<b>Snack and break</b>	<b>Little Wandle Reading</b>	<b>English</b>	<b>Lunch</b>	<b>Phonics/ Spelling/ Handwriting</b>	<b>Indoor PE</b>	<b>PSHE/Library</b>	<b>Class reader</b>
<b>Thurs</b>	Class based Worship: <b>See rota for coverage</b>	<b>Maths</b>	<b>Snack and break</b>	<b>Little Wandle Reading</b>	<b>English</b>	<b>Lunch</b>	<b>Phonics/ Spelling/ Handwriting</b>	<b>RE</b>	<b>Computing</b>	<b>Class reader</b>
<b>Fri</b>	Celebration/ Class Worship: <b>MG/AM</b>	<b>Maths</b>	<b>Snack and break</b>	<b>Book Talk/Picture News</b>	<b>English</b>	<b>Lunch</b>	<b>Phonics/ Spelling/ Handwriting</b>	<b>Geog/Hist</b>	<b>Geog/Hist</b>	<b>Class reader</b>

Mrs Tomines will support children in class each day

Art/DT to be taught over a specific week to be identified across the key phase

# St. George's Central CE Primary School and Nursery

## Y1KB Curriculum Overview

Year 1 and Year 2 Curriculum Overview: 2025 – 2026

	Autumn 1	Autumn 2	Spring 1	Spring 2	Summer 1	Summer 2
<b>Experiences</b>	Curious Critters	Pop Project	Town Walk	Tyldesley Mining Museum	Indian Experience Day	Trip to Liverpool Maritime Museum
<b>Art</b>	Can you draw an animal with just one line?	How do you take a line for a walk?		What shape are the hills?		
<b>DT</b>			How did the Billy Goats Gruff cross the river?		What makes a great tropical fruit salad?	How can you join fabric to create a puppet?
<b>English</b>	<b>Genre:</b> Narrative (Stories)	<b>Genre:</b> Narrative (Diary)	<b>Genre:</b> Persuasive Letters	<b>Genre:</b> Narrative (Stories)	<b>Genre:</b> Non-Chronological Report	<b>Genre:</b> Non Fiction (Information text)
	<b>Text:</b> <i>Once Upon an Ordinary School Day</i> Colin McNaughton	<b>Text:</b> <i>We Are the Beatles</i> Zoe Tucker	<b>Text:</b> <i>Dear Fairy Godmother</i> Michael Rosen	<b>Text:</b> <i>Various stories</i> Julia Donaldson	<b>Text:</b> <i>Lily's Garden of India</i> Jeremy Smith	<b>Text:</b> <i>The Story of the Titanic for Children</i> Joe Fullman
	<b>Audience for writing:</b> Children in Early Years	<b>Audience for writing:</b> Fans of The Beatles	<b>Audience for writing:</b> Characters from the text	<b>Audience for writing:</b> Enthusiasts of Julia Donaldson	<b>Audience for writing:</b> World Explorers	<b>Audience for writing:</b> Young Historians
	<b>Purpose for writing:</b> To entertain	<b>Purpose for writing:</b> To entertain	<b>Purpose for writing:</b> To persuade	<b>Purpose for writing:</b> To entertain	<b>Purpose for writing:</b> To inform	<b>Purpose for writing:</b> To inform
	<b>Grammar:</b> -Combine words to make sentences -Leave spaces between words Capital letters, full stops, question marks and exclamation marks. -Use subordination and co-ordination -Sequence sentences to form short narratives	<b>Grammar:</b> -Combine words to make sentences -Leave spaces between words -Capital letters for names and personal pronoun 'I' -Capital letters, full stops, question marks and exclamation marks. -Use subordination and co-ordination -Consistent use of past tense	<b>Grammar:</b> -Combine words to make sentences -Leave spaces between words Capital letters, full stops, question marks and exclamation marks. -Use subordination and co-ordination -Consistent use of present tense	<b>Grammar:</b> -Combine words to make sentences -Leave spaces between words Capital letters, full stops, question marks and exclamation marks. -Use subordination and co-ordination -Sequence sentences to form short narratives -Form adjectives using suffixes	<b>Grammar:</b> -Combine words to make sentences -Leave spaces between words Capital letters, full stops, question marks and exclamation marks. -Use subordination and co-ordination -Consistent use of present tense	<b>Grammar:</b> -Combine words to make sentences -Leave spaces between words Capital letters, full stops, question marks and exclamation marks. -Use subordination and co-ordination -Consistent use of present tense

# St. George's Central CE Primary School and Nursery

	Autumn 1	Autumn 2	Spring 1	Spring 2	Summer 1	Summer 2
<b>English continued</b>	<ul style="list-style-type: none"> <li>-Form adjectives using suffixes</li> <li>-Expanded noun phrases for description and specification</li> <li>-Consistent use of past or present tense</li> <li>-Use statements, questions, commands and exclamations.</li> <li>-Progressive verbs</li> <li>-Apostrophe's for omission of letters</li> </ul>			<ul style="list-style-type: none"> <li>-Expanded noun phrases for description and specification</li> <li>-Consistent use of past or present tense</li> <li>-Use statements, questions, commands and exclamations.</li> <li>-Progressive verbs</li> <li>-Apostrophe's for omission of letters</li> </ul>		
	<b>Poem:</b> <i>All the things you can say to places in the UK</i> Brian Moses	<b>Poem:</b> <i>Historian</i> John Kitching	<b>Poem:</b> <i>The Owl and the Pussy Cat</i> E. Lear	<b>Poems:</b> <i>If I were a shape</i> Brian Moses	<b>Poem:</b> <i>Bugs</i> Andy Tooze	<b>Poem:</b> <i>The Titanic</i> Gillian Clarke
<b>Geography</b>	Where in the world is the United Kingdom?		What is interesting about Tyldesley?		Where would I prefer to live: Tyldesley or Chembakolli?	
<b>History</b>		What was life like in the 1960s?		What happened in Tyldesley in the past?		Why is the Titanic so famous?
<b>Computing</b>	What is IT?	Do you have the power to create a slide?	Can you be the boss of the robot?		How do you capture a moment?	How can pictures represent data?
			Can you be a chase creator?			
<b>Maths (Y1)</b>	Place Value Addition and Subtraction	Addition and Subtraction Properties of Shape	Place Value Addition and Subtraction	Place Value Length and Height Mass and Volume	Multiplication and Division Fractions	Position and Direction Place Value Money and Time
<b>Maths (Y1/2)</b>	Place Value Addition and Subtraction	Addition and Subtraction Properties of Shape	Y1 Place Value Y1 Addition/ Subtraction Y2 Money Y2 Multiplication/ Division	Y1 Place Value Length and Height Mass/ Capacity/ Temperature	Y1 Multiplication/ Division Y2 Statistics Fractions	Position and Direction Y1 Place Value Time
<b>Maths (Y2)</b>	Place Value Addition and Subtraction	Addition and Subtraction Properties of Shape	Money Multiplication and Division	Length and Height Mass and Capacity Temperature	Statistics Fractions	Position and Direction Time
<b>Music</b>	How could different instruments represent different animals?	What are the features of pop and rock music?	What instruments can be found in an orchestra?	How can songs tell us about history?	What is the difference about Indian music when compared with Western music?	What do African rhythms sound like?



# St. George's Central CE Primary School and Nursery

	Autumn 1	Autumn 2	Spring 1	Spring 2	Summer 1	Summer 2
PE (indoor)	What happens if I don't succeed?	How might I encourage others?	How might I order movement and skills?	How do I compare and develop?	How might I perform a sequence?	How do I exercise safely?
	All year groups participate in a mindfulness session each half-term with a class specific focus built around mental health and well-being.					
PE (outdoor)	What is meant by balance and coordination?	What is the best way to throw and catch?	How can I change the way I travel?	Have you seen my moving and passing skills?	How do we go for gold?	
PSHE	What makes a good friend?	How can we make sure everyone is treated equally?	What helps us stay healthy?	What can we do with money?	Who helps keep us safe?	How do we recognise our feelings?
RE	Who do Christians say made the world?	Who is Jewish and how do they live?		What is the Good News Christians say Jesus brings?	What do Christians believe God is like?	What does it mean to belong to a faith community?
		Why do we give and receive gifts at Christmas?		In what way is the Easter story a new beginning?		
Science	What different groups do animals belong to?	What material is best for.....?	What do we need to grow and stay healthy?		How do plants and animals obtain their food?	Why do some objects float?
Residential		Year 1: one night in the school hall			Year 2: one night camping on the school field	
Forest School				Year 1: What skills do I need to be a Forest School explorer?	Year 2: Do I need a bow saw or a mallet to help me make a wood cookie?	
All Being Well activities	Year 1, Year 1/2 and Y2: Community litter pick		Year 1, Year 1/2 and Y2: visit to Hillcrest Residential Home			
SGC Life Skill	<p>Year 1: Children can use a knife and fork correctly when eating</p> <p>Year 2: Children can tie their own shoe laces</p>					



# St. George's Central CE Primary School and Nursery

## Year 1: What different groups do animals belong to?

Subject Specific Vocabulary		Interesting Book	Sticky Knowledge about animals
fish	A fish is a scaly skinned creature with a spine that swims in water and breathes using gills.		<input type="checkbox"/> The blue whale can produce the loudest sound of any animal.
amphibians	All amphibians begin their life in water with gills and tails. Examples are frogs and newts.		<input type="checkbox"/> Horses and cows sleep while standing up.
reptiles	Are animals that are cold-blooded. Most lay eggs and their skin is covered with hard, dry scales.		<input type="checkbox"/> Giant Arctic jellyfish have tentacles that can reach over 36 metres in length.
birds	Birds have feathers and wings. They lay eggs and are warm-blooded animals.	<b>Wild Animals</b> 	<input type="checkbox"/> Tigers can grow up to a length of 3 metres and weigh up to 300 kilograms when fully developed.
mammals	Mammals are also warm blooded animals. They breath air and have a backbone.		<input type="checkbox"/> There are about 400 million+ dogs in the entire world. The average life of a dog depending on the breed can vary from 10 to 14 years.
carnivore	A carnivore is a meat-eating animal that gets its food from killing other animals.		<input type="checkbox"/> Dolphins use whistling, clicking and other sounds to communicate with each other.
herbivore	A herbivore eats plants.		<input type="checkbox"/> Camels can survive up to six months without water or food due to the fatty tissues stored in their humps.
omnivore	An omnivore eats plants and meat.		<input type="checkbox"/> The cheetah is the fastest animal to roam the earth with top speeds of 113 km per hour.
tame	Domesticated animals that are not frightened of humans and do not try to hurt humans.		
wild	Living in the natural environment and not belonging to humans.		
nocturnal	Animals that are active during the night time.		

All of our topics have a Knowledge Organiser alongside them. These explain what is being taught in the topic, any key vocabulary and sticky knowledge.

Knowledge organisers for all topics can be found on our school website.



# *St. George's Central CE Primary School and Nursery*

## *Y1 Residential – Sleepover*



**Friday 14<sup>th</sup> November 2025**

Meeting for parents: Thursday 23<sup>rd</sup> October



***'Never settle for less than your best'***



# *St. George's Central CE Primary School and Nursery*

## *Forest School – Spring 2*

Clothing requirements:

- Wellingtons
- Waterproof (at least one size bigger)
- Warm trousers to cover legs, warm t-shirt and jumper to cover the arms. OR, trousers, T-Shirt and light weight jacket.

Optional: A warm hat/summer hat/ Sun cream, spare socks



***'Never settle for less than your best'***



# *St. George's Central CE Primary School and Nursery*

*Y1 Life Skill: To use a knife and fork correctly*



*'Never settle for less than your best'*





# *St. George's Central CE Primary School and Nursery*

## *PE & Kit Requirements*

Outdoor PE: Tuesday

Indoor PE: Wednesday

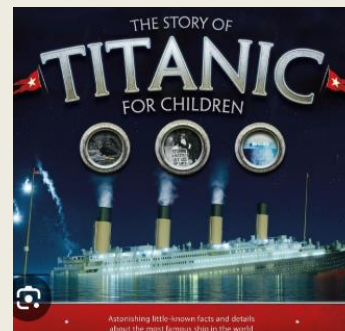
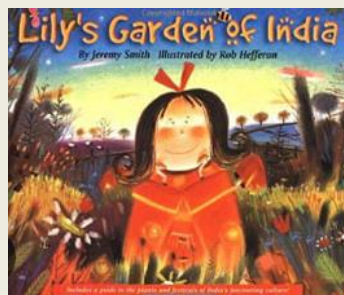
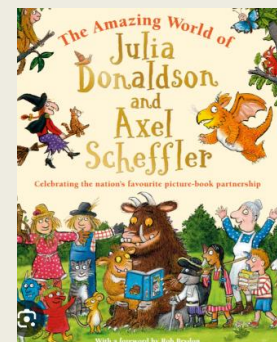
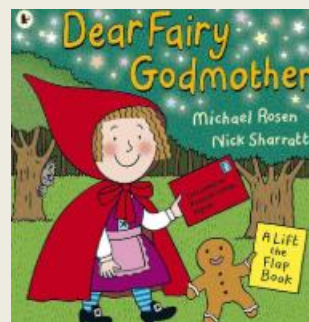
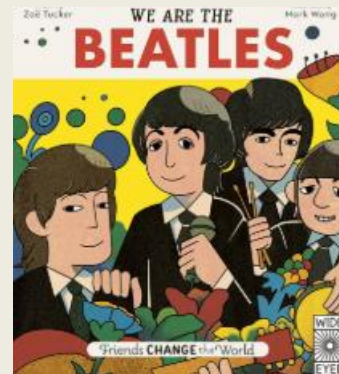
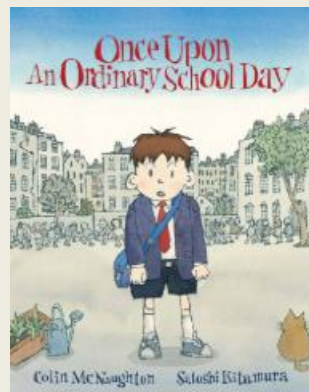
Things to remember:

- Pumps to stay in school
- Come to school in your PE kit



# St. George's Central CE Primary School and Nursery

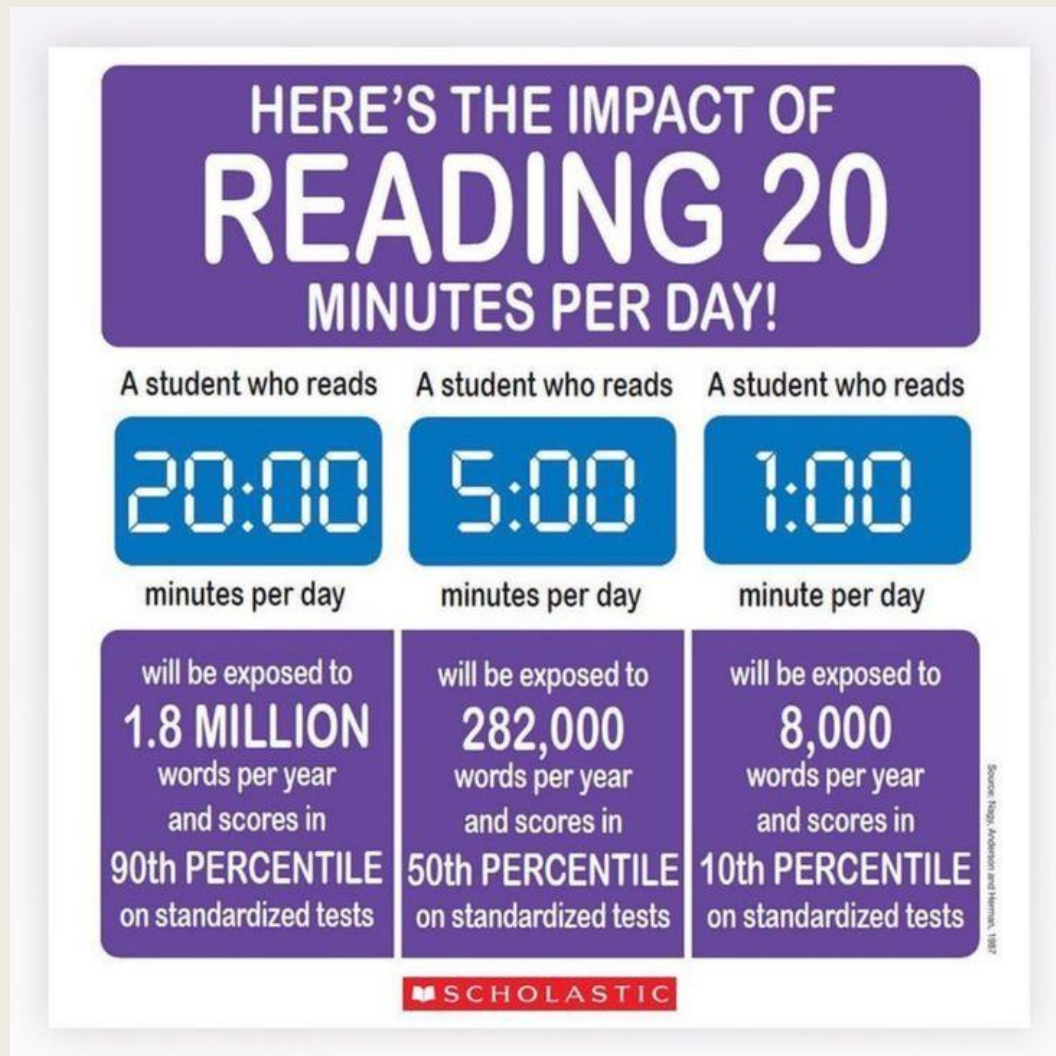
*Reading – it's a kind of magic*





# St. George's Central CE Primary School and Nursery

*Reading – it's a kind of magic*



# St. George's Central CE Primary School and Nursery

## E-Safety

### SCREEN TIME RECOMMENDATIONS



Under 2 years

ZERO screen  
time.



2-5 years old

No more than 1  
hour per day.



5-17 years old

No more than 2  
hours per day.

### Computing - Guides for Parents

- Age Ratings Guide
- Conversation Starters with your child about Online Safety
- Cyberbullying
- Fortnite Battle Royale
- Roblox
- Fortnite Chapter 2
- Grand Theft Auto
- TikTok
- Instagram
- Minecraft
- Nintendo Switch
- Online Challenges
- Online Gaming & Gambling
- Online Safety For Children
- Safer Apps for Children
- Safety Net
- Setting Internet Controls
- Smart Phone Safety
- SnapChat
- Social Media Top Tips
- Twitter
- Supporting Mental Health
- WhatsApp
- Youtube Kids
- Youtube

# St. George's Central CE Primary School and Nursery

## Home Learning



# Seesaw

Name:

Total Recall 2 - 30 seconds

**BIG MATHS...  
★ BEAT THAT! ★**

My 'Beat That' score was...

$9 + 9 =$	$8 + 8 =$	$2 + 8 =$
$3 + 7 =$	$6 + 2 =$	$6 + 6 =$
$5 + 2 =$	$7 + 7 =$	$7 + 2 =$
$6 + 3 =$	$4 + 3 =$	$1 + 9 =$
$9 + 2 =$	$5 + 5 =$	$4 + 2 =$
$4 + 6 =$		$5 + 3 =$

17

TR2  
1







***'Never settle for less than your best'***



# *St. George's Central CE Primary School and Nursery*



***'Never settle for less than your best'***





# *St. George's Central CE Primary School and Nursery*



***'Never settle for less than your best'***





***'Never settle for less than your best'***







***'Never settle for less than your best'***





***'Never settle for less than your best'***







***'Never settle for less than your best'***







***‘Never settle for less than your best’***





***'Never settle for less than your best'***







***'Never settle for less than your best'***







***'Never settle for less than your best'***







***'Never settle for less than your best'***







***'Never settle for less than your best'***





*'Never settle for less than your best'*



# *St. George's Central CE Primary School and Nursery*



*'Never settle for less than your best'*





# *St. George's Central CE Primary School and Nursery*



*'Never settle for less than your best'*



# *St. George's Central CE Primary School and Nursery*



*'Never settle for less than your best'*



# *St. George's Central CE Primary School and Nursery*



*'Never settle for less than your best'*





# *St. George's Central CE Primary School and Nursery*





# *St. George's Central CE Primary School and Nursery*



***'Never settle for less than your best'***



# *St. George's Central CE Primary School and Nursery*



***'Never settle for less than your best'***





# St. George's Central CE Primary School and Nursery



*'Never settle for less than your best'*





# *St. George's Central CE Primary School and Nursery*



***'Never settle for less than your best'***







*'Never settle for less than your best'*





# Atherton & Tyldesley Sports Association



*Friendship through sport*



*'Never settle for less than your best'*



# *St. George's Central CE Primary School and Nursery*



*'Never settle for less than your best'*





# *St. George's Central CE Primary School and Nursery*



***'Never settle for less than your best'***







reading  plus®



***'Never settle for less than your best'***



# Importance of Reading

*‘Children with higher reading skills at age 10 see the impact through their salaries more than 25 years later’*



*‘Never settle for less than your best’*



# Importance of Reading

*‘A strong reader at age 10 would earn 21% more per hour at age 38, on average, than someone from a similar background with poor reading skills’*



*‘Never settle for less than your best’*





# Importance of Reading



*'Never settle for less than your best'*





*'Never settle for less than your best'*





# *St. George's Central CE Primary School and Nursery*



***'Never settle for less than your best'***





# *St. George's Central CE Primary School and Nursery*



***'Never settle for less than your best'***



# *St. George's Central CE Primary School and Nursery*



***'Never settle for less than your best'***





***'Never settle for less than your best'***









### Who to contact when I have a concern – General Guide

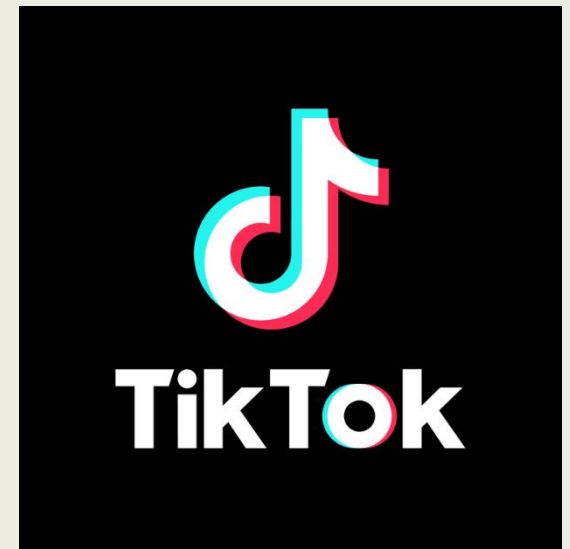
General concerns	Safeguarding concerns
<b>Step 1</b>	
Class teacher – first instance for class matters.	Miss Peaty – first instance for safeguarding matters which are not class based.  If it is not about your child, we are limited in what we can share/discuss.
<b>If this does not resolve the situation, proceed to Step 2</b>	
<b>Step 2</b>	
Class teacher and a senior member of staff.	Miss Peaty – go back and speak again or ask for clarification.  If it is not about your child, we are limited in what we can share/discuss.
<b>If this does not resolve the situation, proceed to Step 3</b>	
<b>Step 3</b>	
Headteacher	Headteacher
<b>If this does not resolve the situation, proceed to Step 4</b>	
<b>Step 4</b>	
Compliments and Complaints Policy	Compliments and Complaints Policy  Safeguarding, Child Protection and Early Help Policy
<b>If this does not resolve the situation, proceed to Step 5</b>	
<b>Step 5</b>	
Ofsted Department for Education	Ofsted Department for Education Wigan LA Manchester Diocese



***'Never settle for less than your best'***

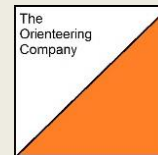
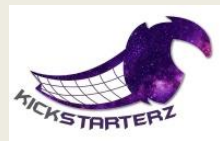
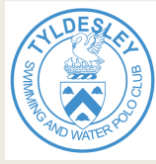
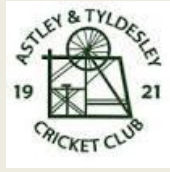






***'Never settle for less than your best'***





*'Never settle for less than your best'*



# 8 out of 10



*'Never settle for less than your best'*



# 8 out of 10



*'Never settle for less than your best'*





# The Iceberg Illusion

Success  
is an  
iceberg

SUCCESS!

WHAT PEOPLE  
SEE

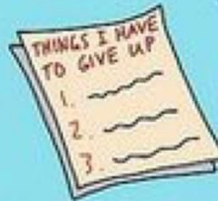
Persistence



Failure



Sacrifice



Disappointment



WHAT PEOPLE  
DON'T SEE

Dedication



Hard work



Discipline



*'Never settle for less than your best'*





*'Never settle for less than your best'*







***'Never settle for less than your best'***







***‘Never settle for less than your best’***





# *St. George's Central CE Primary School and Nursery*



# *St. George's Central CE Primary School and Nursery*

## *A few things to remember*

- Please bring your planner & water bottle to school every day
- Send your children in PE kits Tuesday and Wednesday
- Access reading at least 3 times per week (via ebooks, sharing books...)
- Keep up to date with key information via seesaw and X
- Homework is set on a Friday, and due the follow Friday.



# *St. George's Central CE Primary School and Nursery*

“

**Work hard,  
be kind, and  
amazing things  
will happen.”**

**CONAN O'BRIEN**